

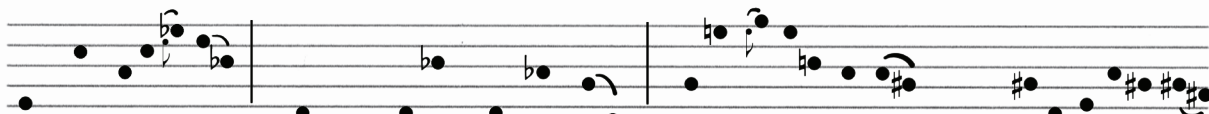
5-27-21



Hi . Not I to tie up loose ends, stamp a moral on the story, or offer a legend 4 your map, but I will say this



is the end. Looking at the maps we made over the last month I notice they're pointing me somewhere, though



not where I expected. Give them away - or burn them. Possession is a disease - though so is forgetfulness.



Hope you find the right balance between the 2. Until I see you again, dearest dearest Nancine, handle with care.

-Paul

P.S. - The rest of the gang says hi.